



LIGHT UP CONCRETE FOR A MODERN ARCHITECTURE

CORPEREAL

a brand of LED fiber optic lighting



ABOUT US

CORPEREAL OPTOELECTRONICS TECHNOLOGY CO.,LTD is equipped with advanced and complete testing instruments and equipment to conduct comprehensive tests and inspections on the optical properties, physical properties and environmental performance of raw materials, optical fibers, illuminators and other products to ensure product quality and stability

The company began to produce fiber optic lighting products in 2008, and developed light-transmitting concrete products in 2015. After several years of careful research and development, the product has made great progress in all aspects of performance and diversification.

CORE TECHNOLOGY



Lotus leaf-effect

The surface of the light transmitting concrete uses German imported paint. The active ingredients in the slurry can penetrate into the capillary holes in the cement base surface, micro-cracks and produce chemical reactions, and penetrate into the internal crystals of the substrate to form a dense waterproof layer, the surface of the building can be automatically cleaned by just a little bit of water to form water droplets.



High fluid self dense

Artesian
The fluidity is large, and it can spread evenly and flow freely after infusion.
Self-compactness
It has good fluidity, does not bleed, does not segregate, and does not need to be vibrated. It can fill the vertical board seams by its own weight.



High rupture strength

Reasonable ratio, less pores, uniform structure, firm bonding between particles, and high flexural strength of the material.
When it is damaged by pressure in one direction, the compressive strength of the load on the one-way area is also great.

CONCRETE PANEL

The light-transmitting concrete siding adopts the form of factory prefabrication. The mechanized production of the light-transmitting concrete siding has formed a scale. It can be mass-produced according to the designer's requirements, and can be customized in size and shape. This kind of light-transmitting commercial concrete has different sizes and can be made into different textures and colors. The light-transmitting concrete under the light can achieve different decorative art effects through the different arrangements of internal light-transmitting materials. His artistic imagination and creation provide more room for realization.

Type	Size(mm)	Transmittance	Light coverage	Color
Starry Sky	600×900×30	10%-13%	70%-85%	White,
	600×1200×30	8%-10%	65%-75%	Medium gray
Isometric arrangement	600×900×30	5%-15%	60%-85%	White,
	600×1200×30			Medium gray
Wave pattern	400×1200×30	10%-13%	70%-85%	White,
	600×1200×30			Medium gray
Pattern customization	600×900×30	5%-15%	60%-85%	White,
	600×1200×30			Medium gray

Starry sky star series

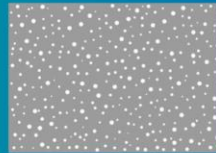
Size: 600mmx900mmx30mm ;
600mmx1200mmx30 mm;

01

Model: CSC-1010

Transmittance: 8%

Light coverage: 75%

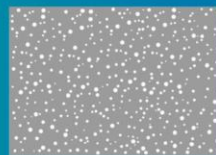


02

Model: CSC-1011

Transmittance: 11%

Light coverage: 80%

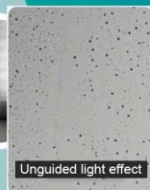
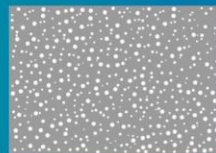


03

Model: CSC-1012

Transmittance: 13%

Light coverage: 85%



Unguided light effect

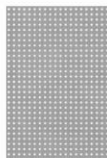


Light guide effect

5/6

ISOMETRIC ARRANGEMENT

Size: 600mm X 900mm X 30mm; 600mm X 1200mm X 30mm



Model: CIA-2010

Transmittance: 15%

Light coverage: 85%



Model: CIA-2012

Transmittance: 8%

Light coverage: 70%



Model: CIA-2011

Transmittance: 12%

Light coverage: 80%



Model: CIA-2013

Transmittance: 5%

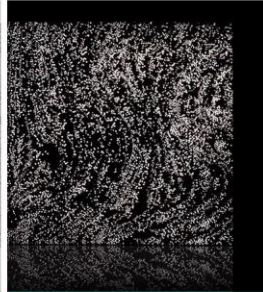
Light coverage: 65%

WAVE PATTERN

Size: 600mm X 900mm X 30mm;600mm X 1200mm X 30mm



Unguided light effect



Light guide effect

Transmittance:10%-15%	Light coverage:60%-80%
Rupture strength: $\geq 8\text{MPa}$	Size error: $\pm 2\text{mm}$
Color:	White,black,gre...,etc
Surface treatment:	Polished, milled, transparent, waterproof & antifouling protection
Installation method:	Back bolt dry hanging
Light source selection:	Led light board,led daylight lamp,strip light...,etc

PATTERN CUSTOMIZATION

- Color: Customizable
- Type: Custom panel/custom cladding/
custom bench
- The diameter, quantity, and arrangement of optical fibers can be customized

DELIVERY TIME

After the finished product is produced, it needs to be tested and all product parameters reach the standard before it can be shipped out.

- Customized product: 40-60 days;
- Standard product: 7-15 days;



White



Grey



Black



Logo styling



Art modeling



Graphic customization



Shape customization

7/8

Park Plaza Series

Light transmission concrete stool

Type: Starry sky stool
Transmittance: 10%
Light coverage: 75%
Size: 450x450x2000mm
Customizable

Integral Concreting technology
Color: Medium grey
Delivery time: 7-15 days

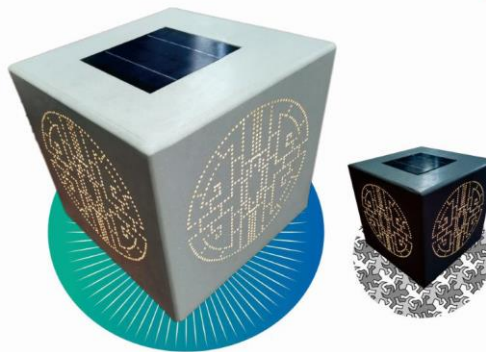


LIGHT TRANSMISSION CONCRETE SOLAR LAWN LIGHT

9/10

The solar lawn lamp is mainly composed of light source, controller, battery, solar battery module and lamp body. The solar lawn lamp is a kind of green energy lamp, which has the characteristics of safety, energy saving, environmental protection and easy installation. Widely used in residential community green grass, park lawn lighting decoration

Type: Solar lawn light
Transmittance: 10%;
Light coverage: 75%;
Size: 400mm x 400mm x 40mm



T
NTAT



BLOCKING BALL

The diameter is 40cm, 50cm (customizable), generally used in park squares, pedestrian streets, supermarkets, residential areas, parking lots, roads, public places, etc.

LIGHT TRANSMISSION CONCRETE BLOCK SERIES

Also known as the car stop series. After adding the light guide fiber element, it can be used to ensure the safety of pedestrians, but also to bring different colors to the city, making the city more charming



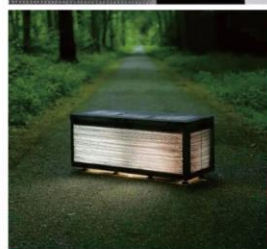
BLOCKING COLUMN

Practical and beautiful, making the city more dazzling and colorful



LIGHT TRANSMISSION TRANSLUCENT CONCRETE

11/12



Light is an original element of the universe. It means life and is essential for every creature. Translucent concrete combines concrete and light. It absorbs light, passes it and gives it off. Massive concrete in combination with soft light in all its colors means only one thing: "LIFE".



THE HIGHLIGHTS

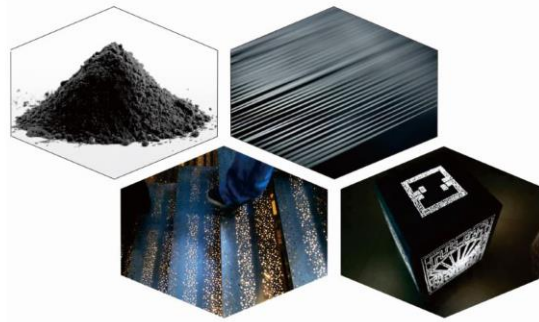
- * INNOVATIVE DESIGN OPTIONS;
- * HIGH DURABILITY;
- * WATER PROOF;

- Soft light makes its way through solid concrete, creating amazing effects in rooms, public spaces and objects. In every form, in every size.
- Impressive, attention-creating and always focusing on the source of all life: LIGHT.
- The merging of cold, hard material and subtle lighting effects becomes the latest inspiring challenge for creative minds.

TRANSLUCENT CONCRETE

- PRODUCTION

It is a precast concrete product. In a special process light-guiding materials are inserted in a fine-grain concrete. The most important process for producing translucent concrete is how to combine light guiding materials with concrete, and finally achieve the desired product and light guide effect.



- Application

- 1) Interior: furniture (tables, bars...), shop interiors, kitchens, partition, walls, floor, sanitary equipment, stairs,...etc
- 2) Exterior: facades, landscape architecture, urban facilities, partition walls, shadowing,...etc.

LIGHT SOURCE SUPPLY SYSTEM

13/14

In general, most of the visible light can be used as a light source for light-transmitting concrete, such as natural daylight, fire, etc., but considering the lighting effect and space constraints, We recommends LED-based light sources. Common LED light sources : LED light board, LED light tube, LED light strip and so on. According to the different requirements of the design, it is possible to use monochromatic or multi-color variable.



1) LED light board

LED panels usually provide the best lighting.

If it is used outdoors, it is necessary to waterproof the light board.

2) LED daylight tube

In some cases, the use of LED tubes is a very suitable solution. And the LED tube is very easy to install.



3) LED light strip

Using LED strips in some local areas is a very good solution. Its length and shape are easy to control, and you can choose different colors of lighting effects.

TRANSLUCENT CONCRETE INSTALLATION

15/16

It can be installed by a dry hanging method similar to natural stone material. In most cases, the space behind the transparent concrete slab needs to be used to install light source. The choice of the appropriate installation method requires consideration of the effects of the light source and installation location. In general, using an artificial light source or using a natural light source for transparent concrete board, everything between the light source and the light-transmissive panel will have a shadow on the other side. If you want to avoid these shadows, you must take appropriate measures at design time.

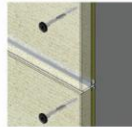
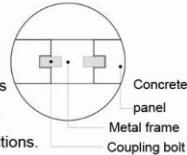


1) Back-bolt stone material curtain wall

This installation method is similar to the installation method of dry hanging stone.

2) Frame mounting

This installation method is generally suitable for the installation of indoor partitions.



3) Rivet mounting

The light-transmitting plate is directly fixed by screws.



4) Bonding mounting

For many projects, especially indoor projects, the use of stone silica is a very suitable installation method.



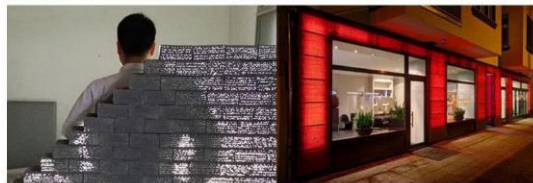
5) Floor bracket mounting

The easiest way to install is to use a raised floor system similar to natural stone installation, which supports at four corners and the support feet can be transparent to avoid shadows.

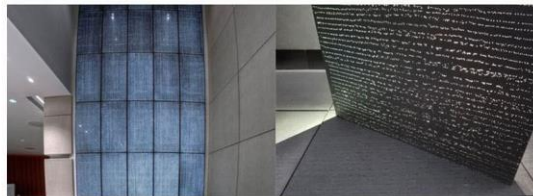
BAR&RECEPTION



EXTERIOR&PARTITION WAL



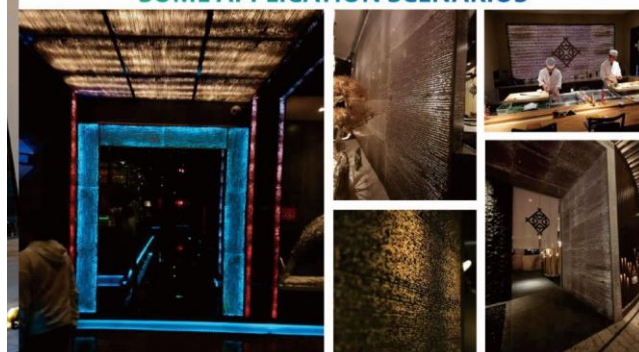
FLOOR BOARD

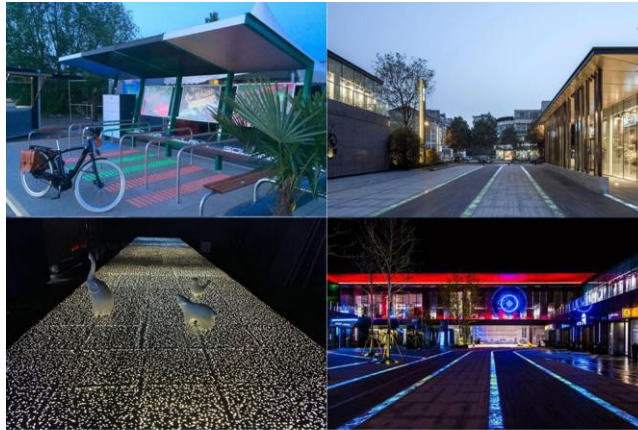




INDOOR

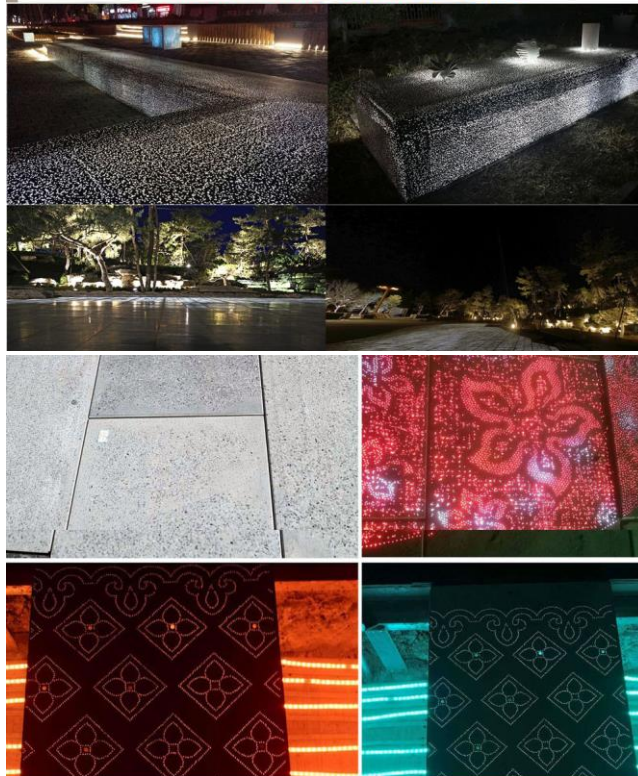
SOME APPLICATION SCENARIOS





OUTDOOR

SOME APPLICATION SCENARIOS



CUSTOMIZED

SOME APPLICATION SCENARIOS





CUSTOMIZED
SOME APPLICATION SCENARIOS

